

The Bee's Life Cycle

These are the stages in the metamorphosis of a worker bee.
Use the words at the bottom of the page to fill in the blanks.

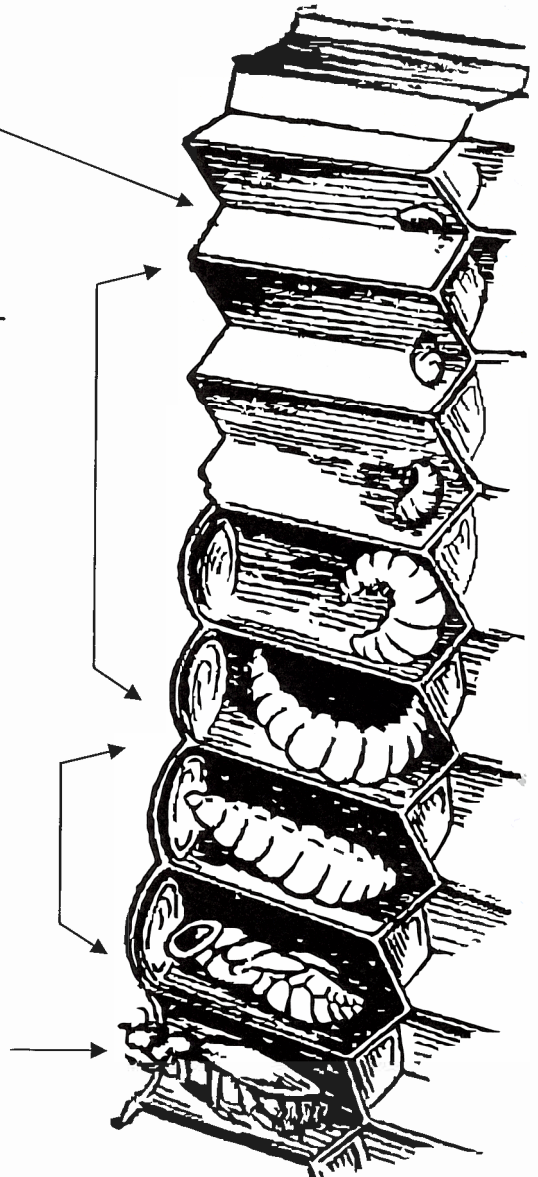
The queen lays an _____
on the bottom of a cell.

The egg hatches. The worker bees
feed the _____

The larva grows and the worker bees
close the cell with beeswax.

The larva spins a cocoon and transforms
into a _____

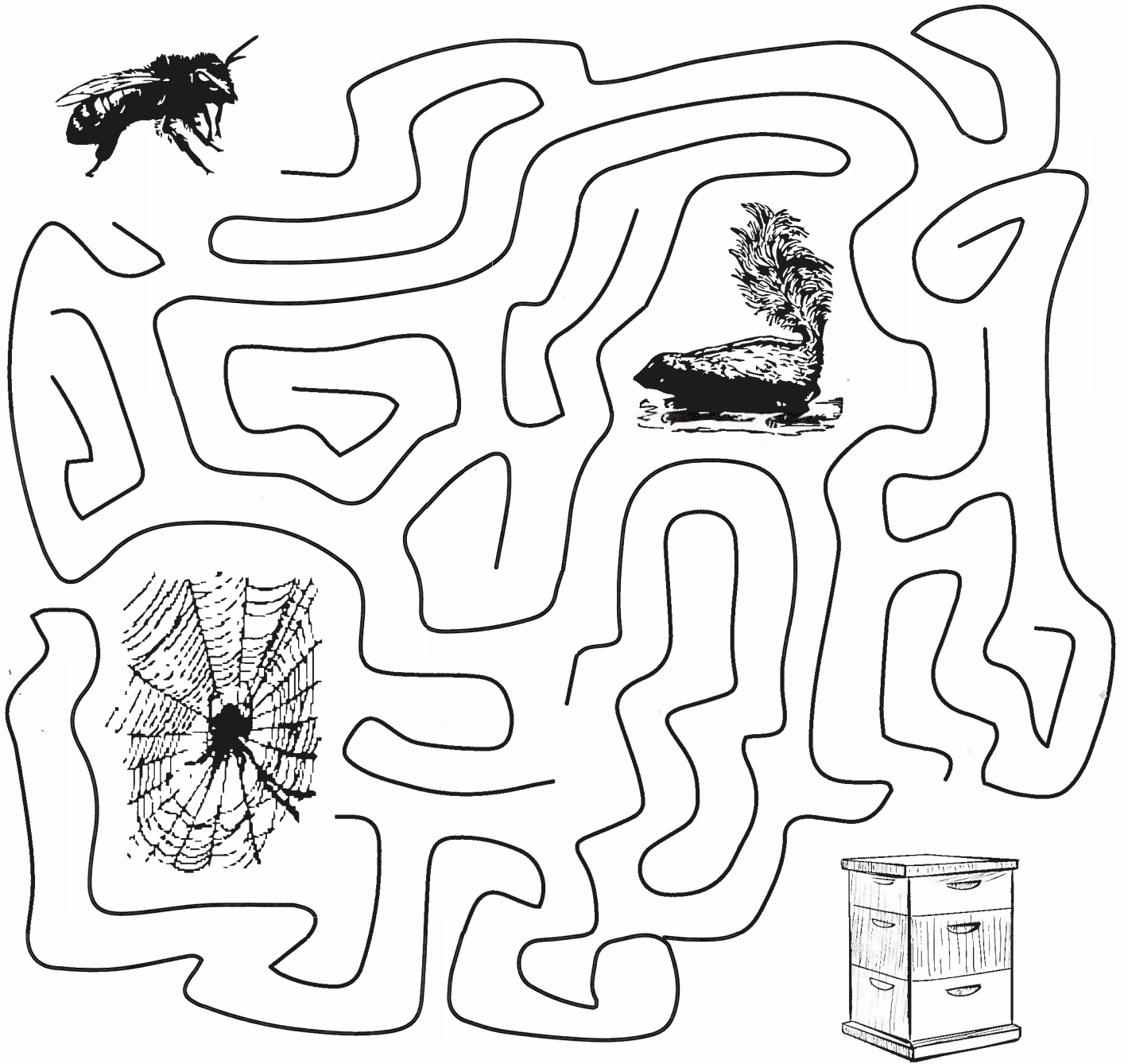
The metamorphosis is complete.
The _____
chews on the wax and leaves its cell.



egg bee pupa larva

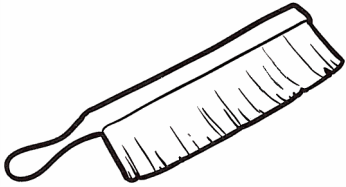
Maze

Help the bee find its hive. Watch out for the skunk and the spider!

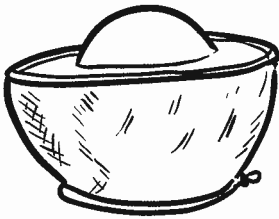


Beekeeping Tools

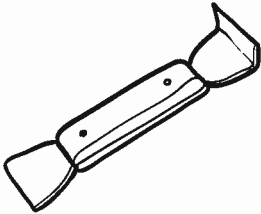
What are these tools used for? Link each tool to the correct description.



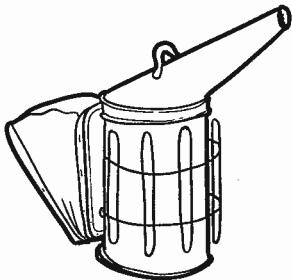
The smoke in the **smoker** calms the bees.



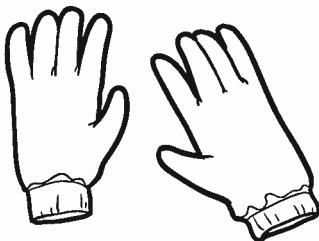
The **hive tool** is used to pry open the hive and separate the frames.



The beekeeper's **gloves** protect hands from bee stings.



The **bee brush** is used to gently sweep the bees from the combs.

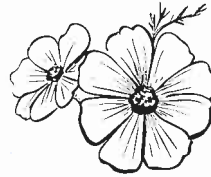


The beekeeper's **hat and veil** prevent the bees from flying into the beekeeper's face and hair.

Word Scramble

Put the letters into the correct order.

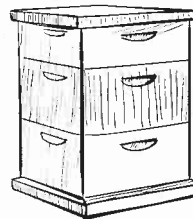
loefrw _ _ _ _ _



ebe _ _ _



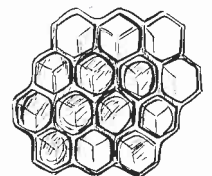
ivhe _ _ _ _



bekeeeepr _ _ _ _ _



ohnyemcob _ _ _ _ _



Who Am I?

Find the names of the three types of bees in a colony.



I am the mother of the colony.
My abdomen is very long.
I lay more than 1,200 eggs every day.

The Q _ _ _ _

I do all the work in the hive.
I clean, feed, build, fan, guard,
and forage.



The W _ _ _ _



I have extra large eyes and a stout
abdomen. I do not have a stinger or
pollen baskets and I cannot gather
flower nectar using my tongue.
I am a male bee.

The D _ _ _ _

Word Search

W	C	O	L	O	N	Y	H	I	V	E
A	B	D	A	N	C	E	E	E	G	S
T	F	L	Y	I	N	G	R	N	Q	M
E	H	O	N	E	Y	E	I	D	U	O
R	B	E	A	R	K	P	N	R	E	K
L	S	U	N	R	E	E	N	O	E	E
A	W	K	O	E	L	B	E	N	N	J
R	A	W	K	L	M	E	C	E	P	A
V	X	E	O	O	E	G	T	F	U	R
A	E	P	C	E	P	G	A	A	P	E
B	F	L	O	W	E	R	R	N	A	R

Words to find:

bear
beekeeping
comb
colony
dance

drone
egg
fan
flying
flower

hive
honey
jar
larva
nectar

pollen
pupa
queen
smoke
sun

water
wax
worker

Use the leftover letters to complete the sentence:

The person that raises and cares for honeybees is called a

— — — — —